

CLASSIC MODERN KITCHEN RENOVATION

The project is the result of the vision of the homeowners, an architect and his wife (an artist), for the renovation of their kitchen and dining room areas. In the homeowners words:

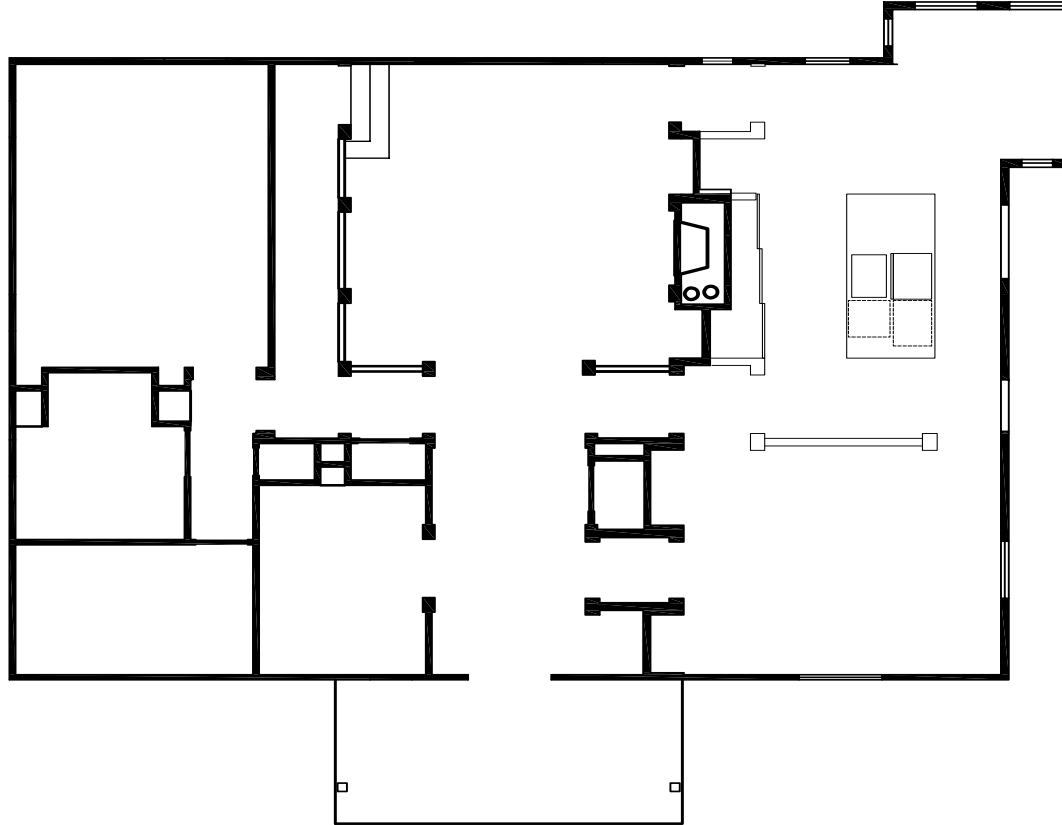
“A kitchen renovation ...for my own home ...is a reversal of the casual-izing trend of merging dining rooms into kitchens; here the spaces were connected - but the purpose was to make the dining room into a grander gallery, so the kitchen portion of the space is equally elegant and creates a series of extended view axes between the spaces.

The design is a delicate balance of modern restraint and ebullient expression. Much like an art gallery, the color palette and the minimalist detailing of cabinets, appliances, & electrical appurtenances all disappear - not to leave one feeling empty as some contemporary works do, but rather to highlight the artifacts and hand-crafted works, which range from a custom-designed mosaic tile rug to ancestral paintings and inherited antiques. Glossy surfaces reflect the calming views in three directions of the hillside waterfall, forest, and lake.”

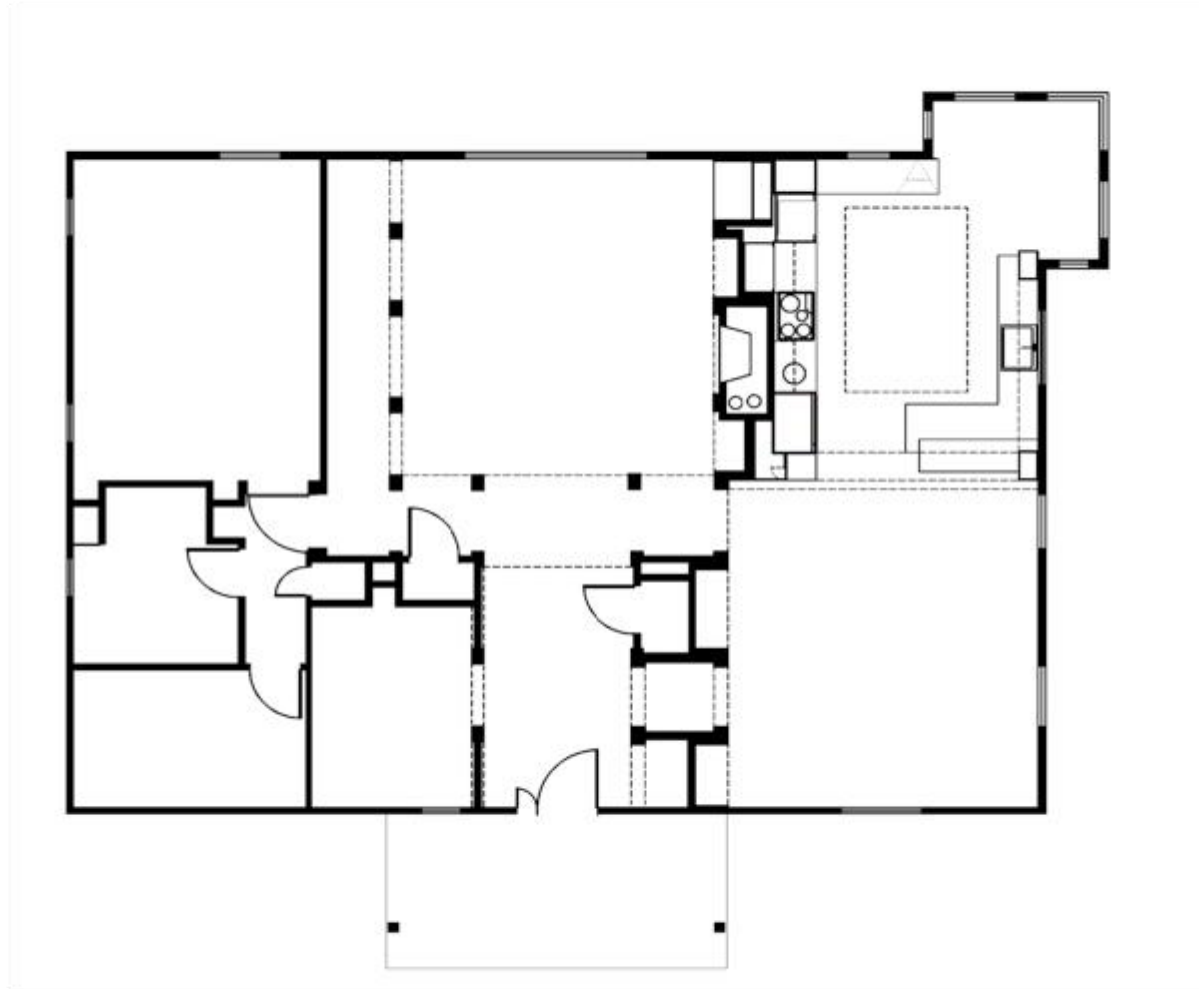
The owners contacted us based on their experience working with my firm 20 years ago. We are grateful for the trust they placed in us to build their dream. Pictures of the renovated kitchen and dining room show that the owner’s vision was realized.

Design Features:

- New floor plan enhances traffic flow
- Enhanced counter work space
- “Nero” Porcelain counter top material
- Task and general LED lighting with remote control dimmers enhance lighting options and ambiance
- Custom framed light cove with metallic gold paint in checkerboard finish directly over mosaic tile rug
- Custom designed mosaic tile was hand made in Italy and shipped to the US
- Backpainted glass backsplash and cabinet door facing
- Mitred glass corner display niche
- Undermount handmade bronze vessel sink
- Remove 6” maple flooring and re-install in dining room
- Integrate appliances to achieve seamless appearance
- Install tile floor to very precise specifications with European floor levelers, setting materials and grout
- Kitchen cabinetry with 1/8” reveal of doors and drawers, touch latches, 45 degree bevel door fit and motorized operators for a seamless effect



Before Floor Plan



After Floor Plan



After View from Dining Room to Kitchen



Before View over Island to Breakfast Room

After View without
island towards
Breakfast Room





Before View Breakfast Nook



After View Breakfast Nook –
Pullout Drawer Bench with Mahogany Lid



Before View of Left Kitchen Wall



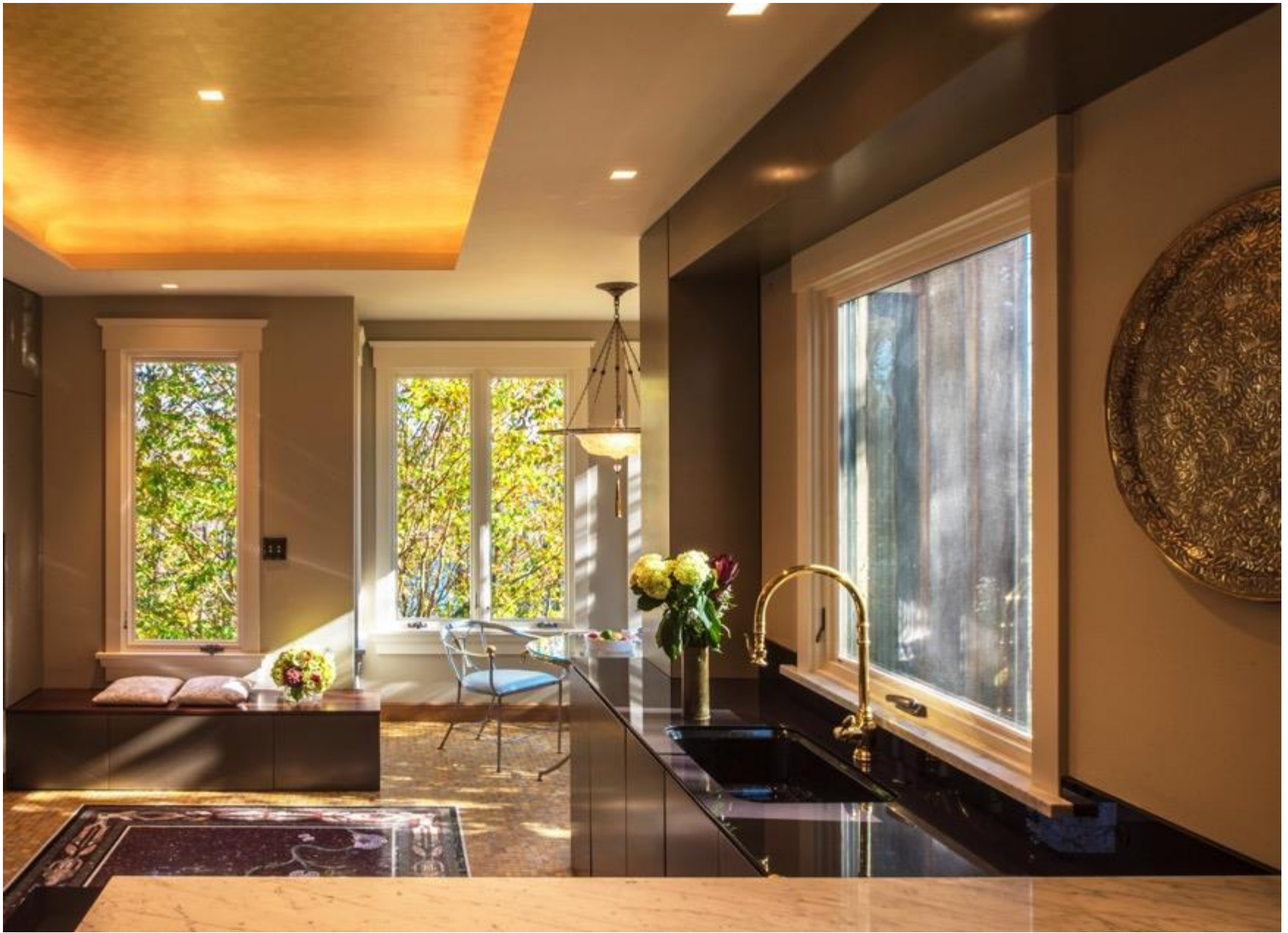
After View of Left Kitchen Wall

Painted Glass Backsplash and on Upper Cabinet Doors, Mahogany Base Cabinet Doors with Overlay to simulate Antique piece in DR, Recessed Appliance Garage to right of flush black glass cooktop with motorized touch control operation, Wolf Steam Oven



After View Kitchen to Dining Room

Waterfall edge marble peninsula counter, window sill in matching material, Round black flush antique replica outlets set into porcelain backsplash are nearly invisible



After View Over peninsula counter to breakfast bay



Before View Dining Room



After View Dining Room



After View Kitchen to Dining Room



After View Kitchen Diagonal

Light cove mirrors tile rug size.
Pittcon radius upper cove, low voltage
LED light strips on wireless dimmer
switch and metallic gold paint with
checkerboard pattern to simulate 1' x
1" mosaic marble field tile. HVAC
registers all flush integrated into
cabinetry.



View from Dining Room to Kitchen